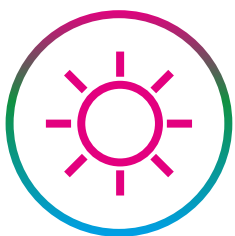


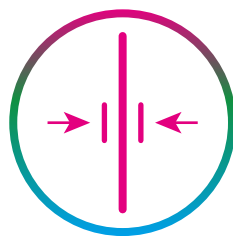
# Dual Side Digital Sign

BRIGHTNESS: 1500 - 700 NITS



## Brightness

1500-700 nits  
Side A Face to Outdoor  
Side B Face to Indoor



## Thickness

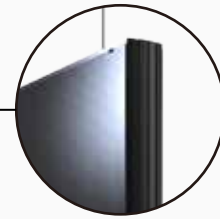
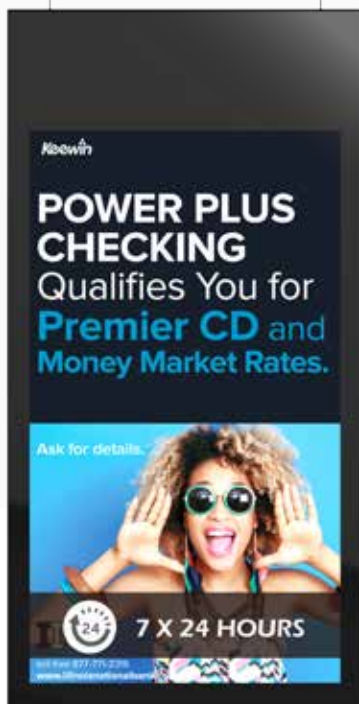
Two Display  
Back to Back  
44mm Thickness



## Media

Windows OS  
Android OS  
TV Board

# INDUSTRIAL DESIGN



Acrylic Glass  
Cover Glass



Aluminum  
Framework

# HIGH TEMPERATURE LCD

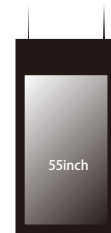
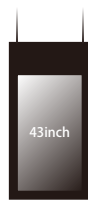


85°C

tni temperature

110°C

# Technical Specification



## Panel

	KDS43-15	KDS55-15
Panel Size (inch)	43	55
LCD Manufacturer	Samsung / LG / AUO / Sharp / Keewin	
Active Display Area ( h x w mm)	941 x 529	1210 x 680
Resolution (pixel)	1920 x 1080	1920 x 1080
Aspect Ratio	16 : 9	16 : 9
Brightness (nits)	1500 - 700	1500 - 700
Contrast Ratio	4000 : 1	4000 : 1
Grey to Grey Response Time (ms)	12	12
Viewing Angle (H/V)	178° / 178°	
Backlight Configuration	LED Light	
Operational Life Cycle-mtbf (hours)	50,000	

## Micro-Controller

Automatic Brightness	Yes
Auto Cooling	Yes

## Power

Input Voltage	AC220/110 V ± 10%, 50 / 60 HZ	
Max Power Consumption (w)	235	300

## Enclosure

IP Rating	IP4X	
Enclosure Material	Aluminum	
Enclosure Lifetime	10 years	
Glass Type	N / A	
Sound	8Ω 2W x 2	
Unit Dimension (w x h x d mm)	630 x 1235 x 44	784 x 1528 x 44
Bezel Width (mm)	52	52
Weight (kg)	22	33

## Environment

Operating Environment	Window, indoor
Operating Temp.	0 °C ~ +40 °C
Operating Humidity	10 % ~ 80 %
Operating Altitude (m)	≤ 2000

## Media

	CPU	Memory	Storage	OS	I/O
Windows OS	Core / Celeron / Atom	4 / 8 / 16 / 32 G	128 / 256 / 512 G	Win 7 / 10 32/64bit	VGA / HDMI / USB / RS232 / RJ45
Android OS	Rockchip / Allwin	1 / 2 / 4 G	8 / 16 / 32 / 64 / 128 G	Android 4.4 - 8	VGA / HDMI / USB / RS232 / RJ45
TV Board	Mstar / NOATEK				VGA / HDMI / USB
Option	4G / Wi-Fi				